



QUALITY HOMES WITH A FOCUS ON PROCESS, MATERIALS, & CRAFTSMANSHIP

LINDEN II

SPLIT ENTRY



THE OPEN FLOOR OF THE LINDEN II WELCOMES YOU INTO THIS SPACIOUS HOME WITH MODERN AMENITIES AND TIMELESS ARCHITECTURAL DETAILS. ALL LOOMIS HOMES COME WITH A HOME WARRANTY INCLUDING 1-YEAR WORKMANSHIP & MATERIALS, 2-YEAR MECHANICAL SYSTEMS, AND A 10-YEAR STRUCTURAL INTEGRITY WARRANTY.

- 1,362 FINISHED SQUARE FEET
- 1,081 UNFINISHED
- 3 BEDROOMS
- 2 BATHS
- WALK-IN MASTER CLOSET
- 3 STALL GARAGE

LINDEN II | SPLIT ENTRY FEATURES

EXTERIOR FEATURES

ARCHITECTURAL SHINGLES
W/30-YR WARRANTY
LOW-MAINTENANCE ALUMINUM SOFFIT & FASCIA
PREMIUM VINYL SIDING (.044 THICKNESS)
PAINTED WHITE MILLWORK TRIM
ASPHALT DRIVEWAY
STEEL RAISED-PANEL GARAGE DOORS
ADD'L EXTERIOR LIGHT FOR 3RD STALL
SATIN NICKEL EXTERIOR HARDWARE

INTERIOR FEATURES

KNOCK-DOWN CEILING FINISH
SHERWIN WILLIAMS® SHUR SCRUB FLAT PAINT
SHAW® RED BUD CARPET
SATIN NICKEL LIGHT FIXTURE PACKAGE
WHITE PANEL DOORS W/WHITE TRIM
SATIN NICKEL INTERIOR DOOR HARDWARE
RUBBERMAID® CLOSET SHELVING
FUTURE BASEMENT BATH ROUGH-IN

ENERGY SAVING FEATURES

PAYNE® 95.5% SEALED GAS FURNACE
50-GALLON ELECTRIC WATER HEATER
ENERGY EFFICIENT SEALED ELECTRICAL OPENINGS
WINDSOR® VINYL CLAD WINDOWS W/LOW E GLASS
R21 FIBERGLASS INSULATION W/POLY VAPOR BARRIER
R49 BLOWN FIBERGLASS INSULATION IN ATTIC SPACE
R15 EXTERIOR FOUNDATION INSULATION

HOME SAFETY FEATURES

ICE & WATER PROTECTION ON ROOF EAVES & VALLEYS
DRAIN TILE W/SUMP BASKET A PUMP

Loomis Homes reserves the right to substitute product of equivalent quality, style, and value.

HOME CONVENIENCE FEATURES

2 CABLE/TV JACKS
1 PHONE JACK
200 AMP ELECTRICAL SERVICES
DRYER VENTING
WASHER HOOK-UPS
GARAGE DOOR OPENER ON DOUBLE DOOR
2 EXTERIOR WATER SPIGOTS
EXTERIOR GFI OUTLETS W/WATERPROOF COVERS

KITCHEN FEATURES

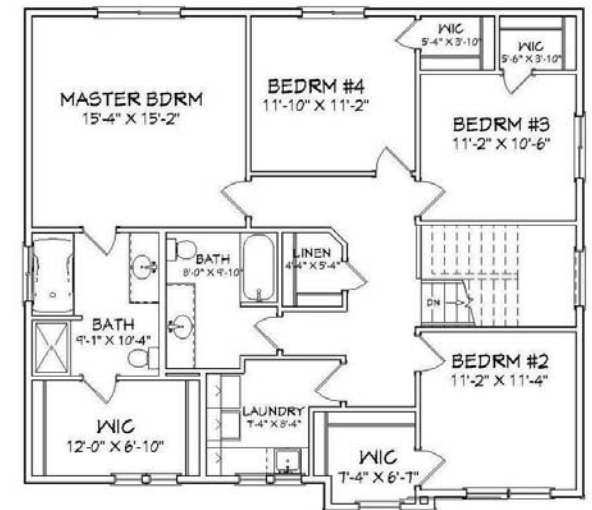
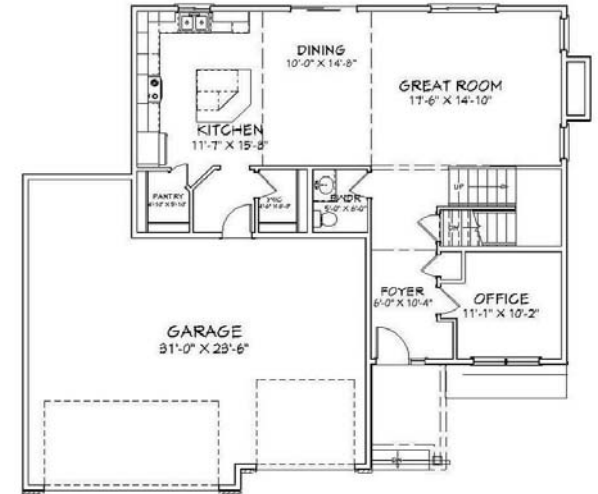
KOCH® CABINETS
CROWN MOLDING ON KITCHN CABINETS
LAMINATE COUNTERTOPS W/BACKSPLASH
STAINLESS DOUBLE BOWL SINK
DELTA® KITCHEN FAUCETS
WATERLINE TO REFRIGERATOR
FRIGIDAIRE 18.2 CU. FT. TOP FREEZER REFRIGERATOR
FRIGIDAIRE 24" BUILT-IN DISHWASHER
FRIGIDAIRE 1.6 CU. FT. OVER-THE-RANGE MICROWAVE
FRIGIDAIRE 30" FREE-STANDING ELECTRIC RANGE
NON-VENTED MICROWAVE HOOD

BATH FEATURES

CULTURED MARBLE VANITY TOP
FULL-HEIGHT PLATE GLASS MIRRORS
VINYL FLOORING

QUALITY CONSTRUCTION METHODS

5000 PSI CONCRETE FOOTINGS
CONCRETE MASONRY UNIT BLOCK FOUNDATIONS
2X6 EXTERIOR WALL FRAMING
2X4 INTERIOR WALL FRAMING
HOUSE WRAP ON ALL EXTERIOR WALLS
ENGINEERED ROOF TRUSS SYSTEM
15/32 INCH OSB ROOF SHEATHING W/H CLIPS



© LOOMIS HOMES | MN BUILDERS LICENSE BC653240
ALL SPECIFICATIONS ARE SUBJECT TO LOCAL CODES

LOOMIS-HOMES.COM